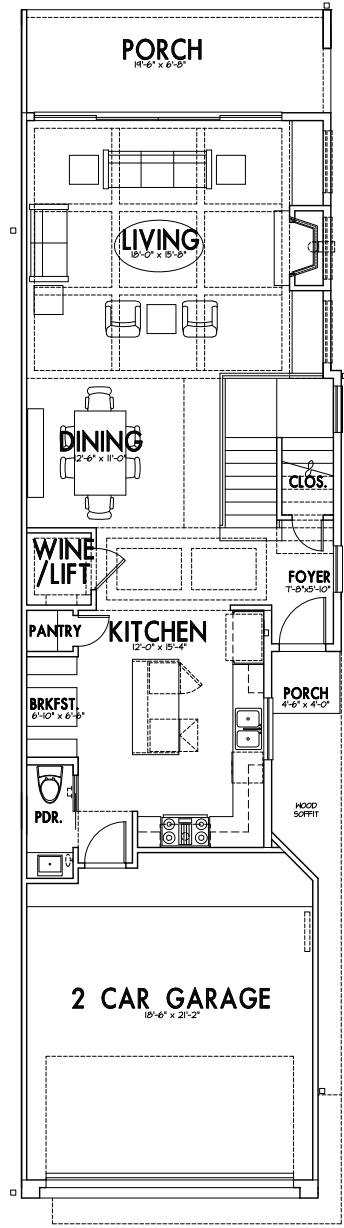
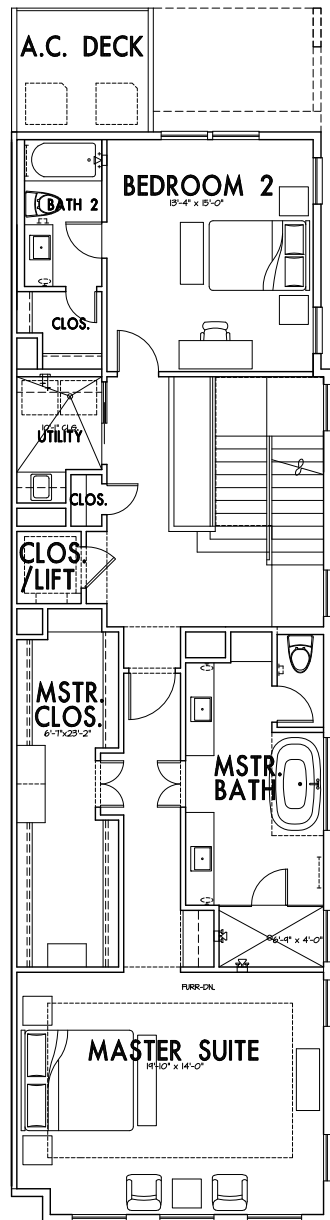
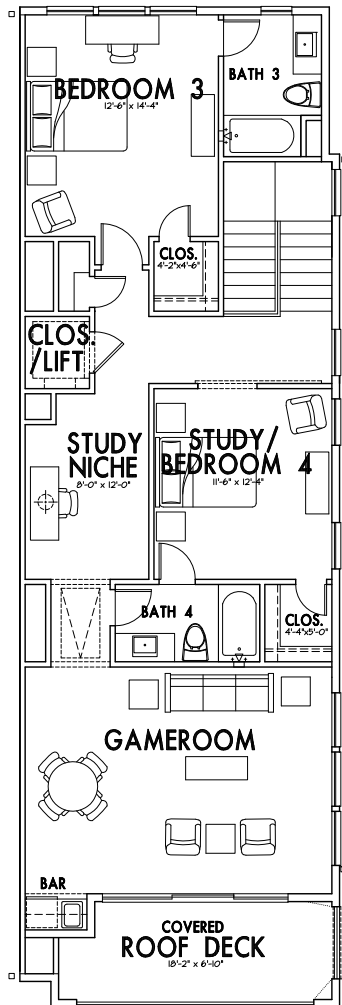




1204 LaRue Street

SQUARE FOOTAGES	
FIRST FLOOR:	930
SECOND FLOOR:	1422
THIRD FLOOR:	1134
TOTAL LIVING:	3486 S.F.
GARAGE:	406
PORCHES: 18 + 133	151
TOTAL SLAB:	1487 S.F.
A/C DECK:	73
ROOF DECK:	120
TOTAL COVERED AREA:	4163 S.F.





1206 LaRue Street

SQUARE FOOTAGES	
FIRST FLOOR:	930
SECOND FLOOR:	1422
THIRD FLOOR:	1134
TOTAL LIVING:	3486 S.F.
GARAGE:	406
PORCHES: 18 + 133	151
TOTAL SLAB:	1487 S.F.
A/C DECK:	73
ROOF DECK:	120
TOTAL COVERED AREA:	4163 S.F.

